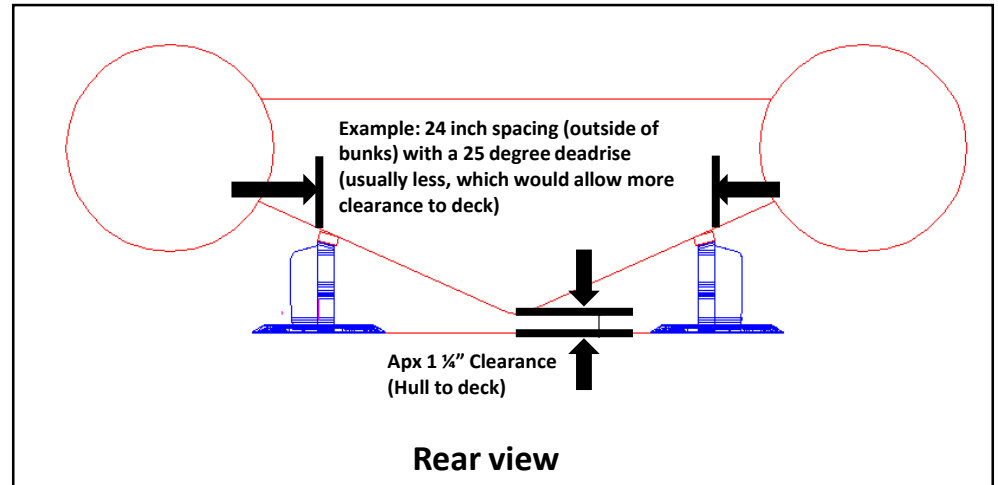
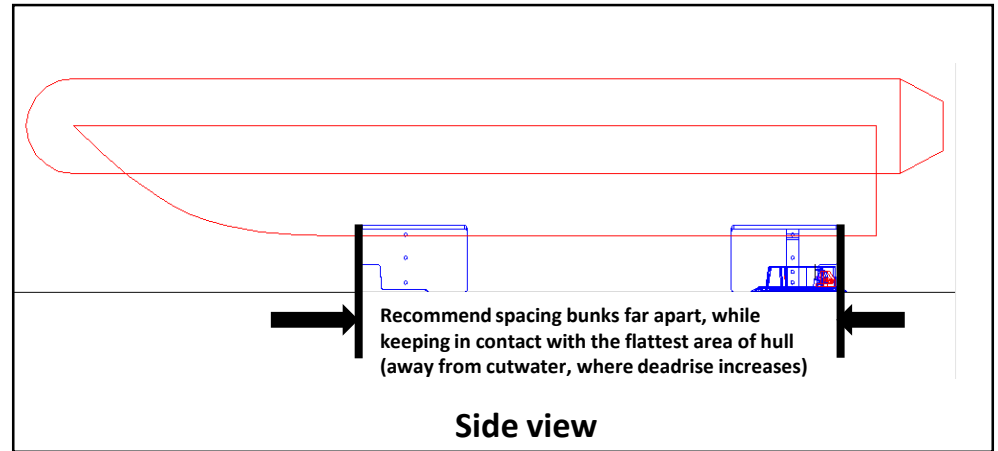
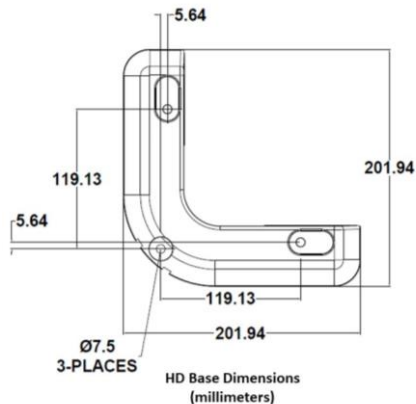


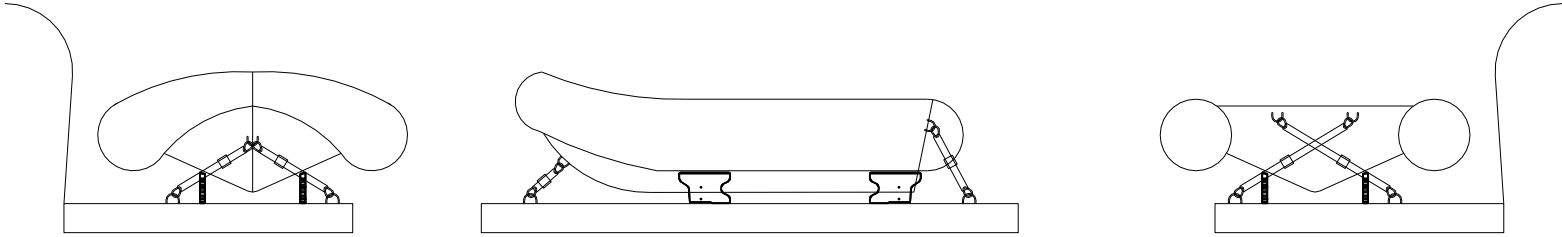
IMPORTANT!!!-PLEASE READ

Installation Location Tips

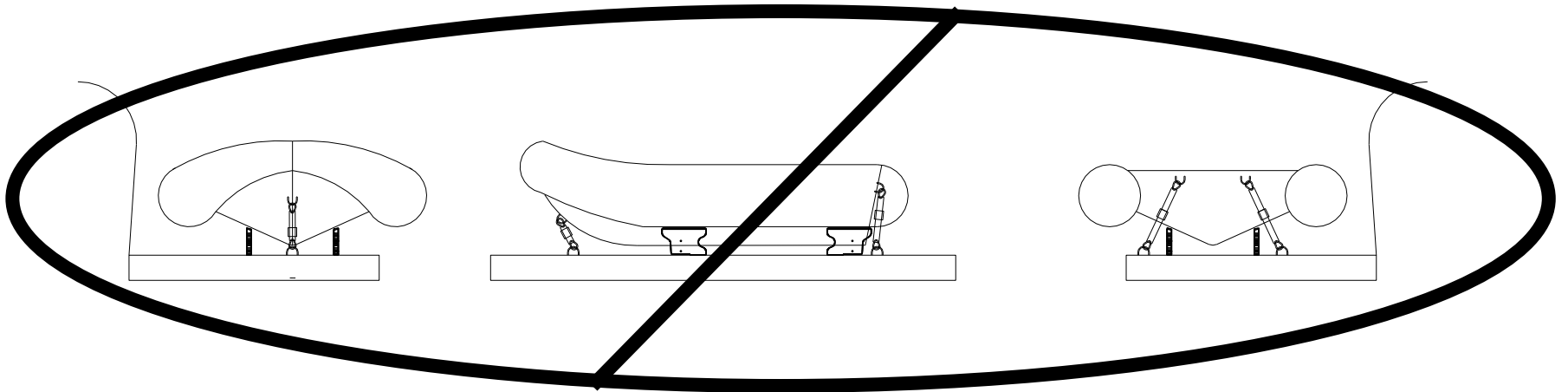
- Professional installation is recommended.
- (THESE ARE TIPS ONLY. THERE ARE TOO MANY HULL VARIATIONS TO PROVIDE EXACT INSTALLATION LOCATIONS)
- Avoid locating watercraft where it may be subject to extreme forces (ie: water, wind)
- Check the hull deadrise and fore-aft length from transom to the cutwater radius to help determine the chock locations.
- Forward chocks may need to be spaced narrower to allow watercraft to be slightly angled and allow water to drain, otherwise, excessive weight could result from water collecting inside.
- Check the integrity of the hull, including hull thickness, chine and stringer locations, making sure proper support will be provided.
- Approximately 24 inch side to side outer width of bunks allows for most jet skis and many tenders. (Most jet skis have a 22 degree deadrise and have chines at least 24 inches apart)
- Check where outboard engine will rest. A skid plate may be needed to protect deck.
- For more information, please see owners manual, as well as our website: www.versachock.com/installation-tips/



Tie Down Configuration

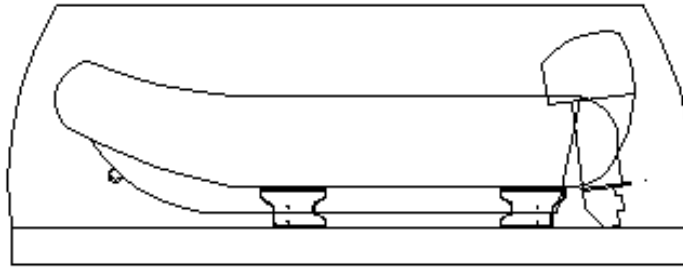


Recommended

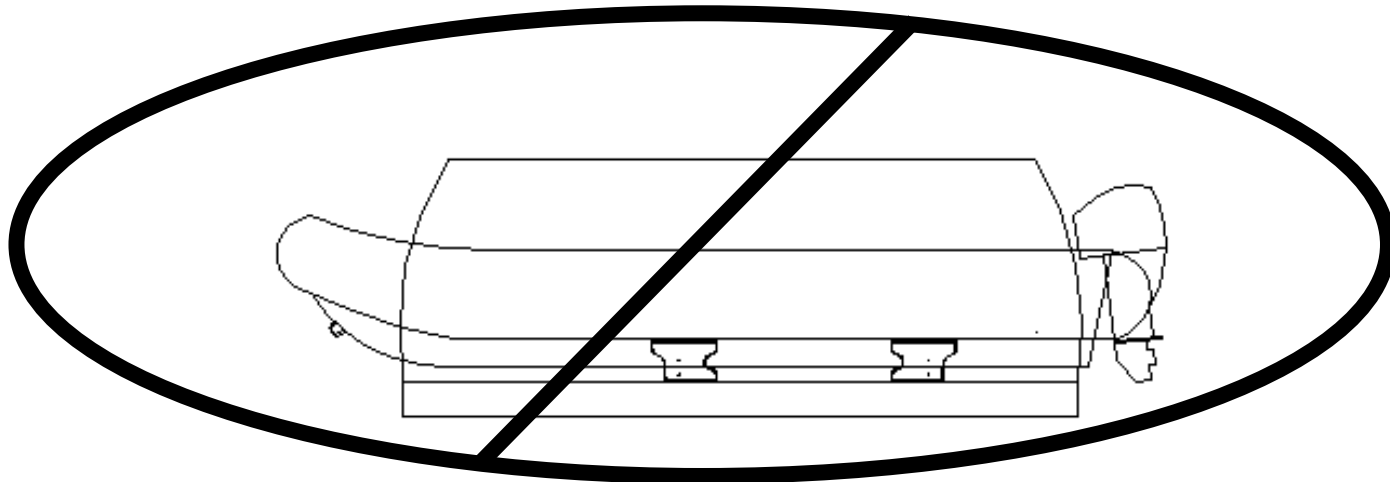


Not Recommended

Size configuration



Recommended



Not Recommended