

TenderChocks™
BY **VERSACHOCK®**
www.versachock.com

HD SERIES
BY **VERSACHOCK®**
www.versachock.com

Owners Manual

VERSACHOCK®
Removable Cooler/Cargo/Tender Chock Systems
www.versachock.com



Detailed Specifications

VCTENDER

Product Features

- Made with high quality powder coated cast aluminum (chocks/bases) HDPE (bunks)
- Capacity: 1250lbs (standard model)
- Bunk size: 1" wide x 9" long x 6" tall
- Universal design fits most shapes and sizes of tender/jet skis
- Compact design stores easily when not in use
- * Tie downs/D-rings not included (required for securing watercraft)
- Kits include 4 chocks/4 base brackets (installation hardware not included)

VCTENDERHD

Product Features

- Same features as VCTENDER plus:
- Double wide bunks for added support

VCTENDERWHL

Product Features

- Same as VCTENDER plus:
- Includes Load assist wheels on 2 bunks

VCHDWHITE4PK

Product Features

- Made with high quality powder coated cast aluminum
- Heavy Duty for large coolers, dock boxes, and cargo
- Holes in chocks for adding your own bunks, etc

Policies

Liability

The installation and use of VersaChock products are entirely the customers risk. We highly recommend an experienced technician evaluate the product specification, usage and installation prior to purchase/installation. We also recommend professional installation. Safety and customer satisfaction are our number one priority!

Warranty

VersaChock warrants products due manufacturers defects for one year from date of purchase to original retail purchaser. VersaChock will, at its discretion, repair or replace the defective product. Shipping costs, labor for product removal/installation, loss of use, loss of time, consequential loss, or any other claim of loss arising, will not be the responsibility of VersaChock (unless required by law) VersaChock will not be responsible for improper installation/use, abuse, overloading product, extreme conditions, or neglect.

Returns

Returns will only be accepted with a pre-authorized RA (Return Authorization) Please contact customer service to obtain an RA.

Defective returns: will only be accepted with an RA. Return must include description of defect. Refund will be issued if defect is due to the fault of VersaChock.

Shipping Damage and Loss

VersaChock inspects 100% of product packed and shipped, so it is not likely product to have damage caused prior to shipping. All damage and loss due to shipping will require claims be made with shipping carrier. Please contact carrier immediately upon damage or loss.

**** VersaChock Customer Service will provide assistance for returns and claims in order to provide the best experience for our customers! Your satisfaction is our number one priority!**

Contact

813-389-5088 sales@versachock.com

Please read entire manual carefully before installation/usage

This Owners Manual is applicable for the following VersaChock models
(See last page for detailed specifications)



VCTENDER



VCTENDERHD



VCTENDERWHL



VCHDWHITE4PK

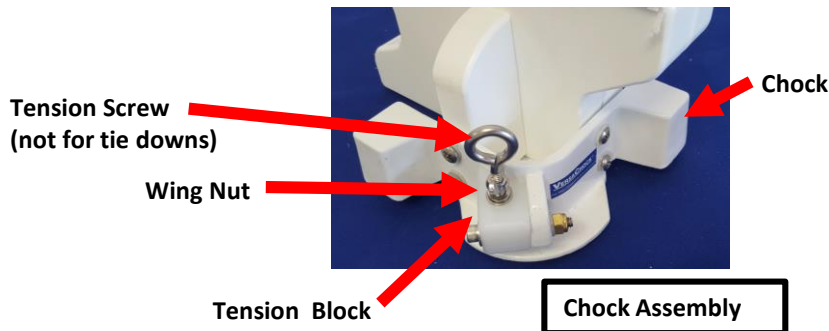
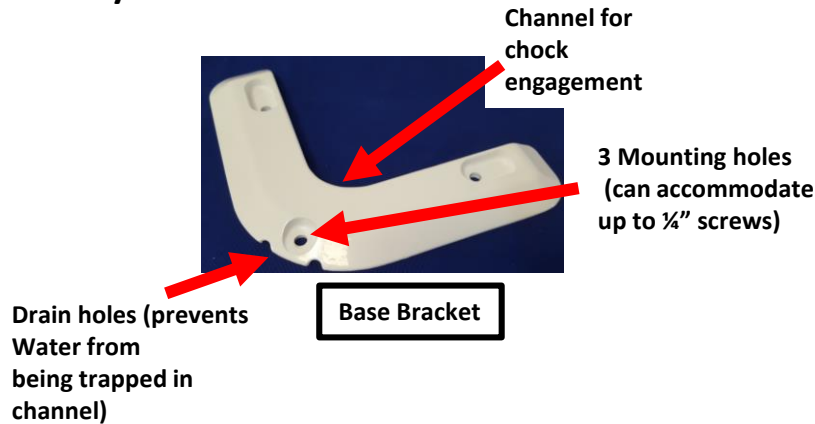
Thank you

for purchasing a VersaChock product! We strive at creating and manufacturing the most innovative, highest quality products. VersaChock products are manufactured by Jefferson Design Inc, based in Tampa Bay Florida. We support local suppliers whenever possible and assemble everything here in the Tampa Bay area. We hope our products offer you great enjoyment for many years. We always welcome your comments and feedback! If you have any questions or concerns, please do not hesitate to contact us. Your satisfaction is our number one priority!

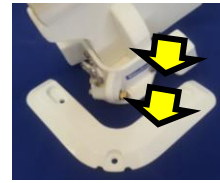
Important Notes:

- Professional installation is recommended.
- Tie downs must be installed in order to secure watercraft (not included) Insufficient securing may result in damage, injury, or loss.
- Be sure the locks are engaged on all chock assemblies prior to use.
- Be sure to tighten tension screw and wing nut to keep chocks from disengagement.
- Always remove chocks when not in use.
- Not intended for use in extreme conditions (ie: high forces from water, wind, etc)

Base/Chock Part Features



How to Insert and Lock Chock Assemblies



1. Insert Chock tongue into channel in base bracket (be sure chock is fully engaged)



2. Turn tension screw clockwise until chock is snug to base (do not overtighten) Pull on chock to ensure it will not disengage.



3. Tighten wing nut for added security. (* Do not use eyelet for tie downs)

* To remove Chock Assemblies, reverse steps 1 through 3

Installation Tips

- Professional installation is always recommended
- There are too many variables to give specific installation instructions.
- Basic installation sequence:
 1. Insert chocks into bases (as described above)
 2. Locate chock/base assemblies in approximate location on mounting surface (swim platform, dock, etc)
 3. Carefully locate cargo/watercraft onto chocks, being sure not to rely on the chocks to support the weight.
 4. Mark the outermost hole locations of the base brackets on the mounting surface (suggest using a marker or masking tape)
 5. Remove the cargo/watercraft and chocks (leaving the base brackets in place.
 6. Mark the remaining hole locations.
 7. Complete installation of the base brackets with desired method for application.
- Please visit www.versachock.com/installation-tips/ for additional tips

Other Helpful Info

